

MESSRS. : _____

AGENT : _____


SPECIFICATION of Optical Lens

MODEL NO. : NCL-11(BLACK)

 **NIPPON CERAMIC CO., LTD.**

176-17 Hirooka, Tottori-shi, 689-1193 JAPAN
TEL: +81-857-53-4666 FAX: +81-857-53-3532

Approved by	Checked by	Prepared by

MODEL NO. :	DRAWING NO. :	REV :	PAGE	 NIPPON CERAMIC CO., LTD.
NCL-11(BLACK)		A	1 / 5	
PART NO. :				

1. Scope

This specification describes a optical lens which is used for passive infrared detector.

2. Type of Lens

2.1. Type Name: Spherical shape optical lens

2.2. Model No.: NCL-11(BLACK)

3. Dimensions

See Figure 1.

4. Material

High Density Polyethylene (HDPE)

5. Color

Black

6. Optical Characteristics**6.1. Number of Zones**

16 zone

6.2. Detection Area

See Figure 2.


7. Environmental Characteristics**7.1. Operating Temperature**

-20 °C ~ +70 °C

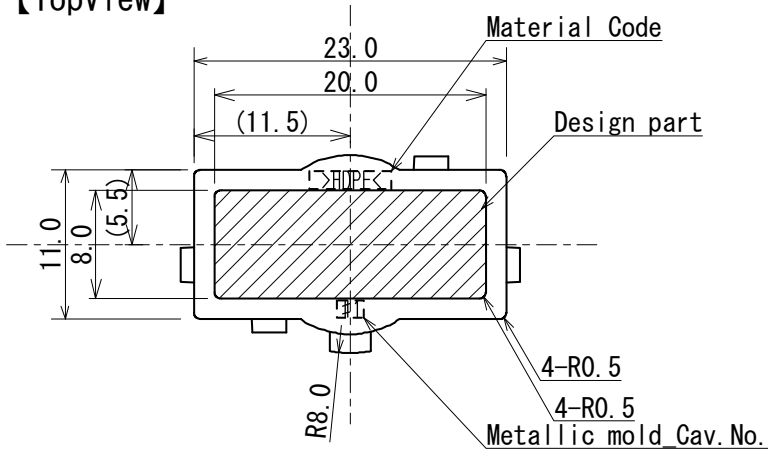
7.2. Storage Temperature

-25 °C ~ +75 °C

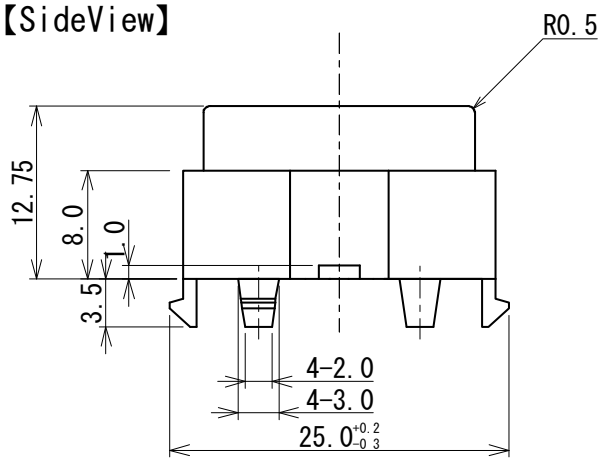
* Please avoid using the lens in direct sunshine conditions because it may cause degradation of the transmittivity.

MODEL NO. :	DRAWING NO. :	REV :	PAGE	
NCL-11(BLACK)		A	2 / 5	
PART NO. :				

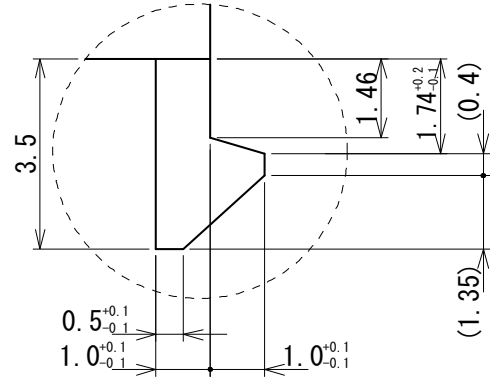
【TopView】



【SideView】

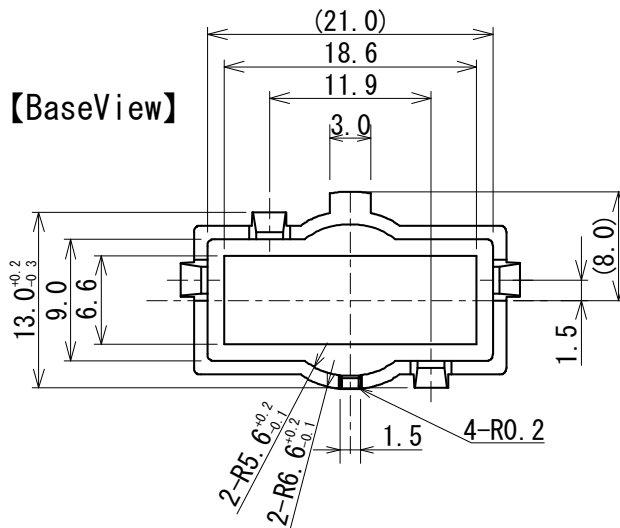


【hook(four places) expansion details】



※Thickness of PCB : 1.6mmt assumption

【BaseView】

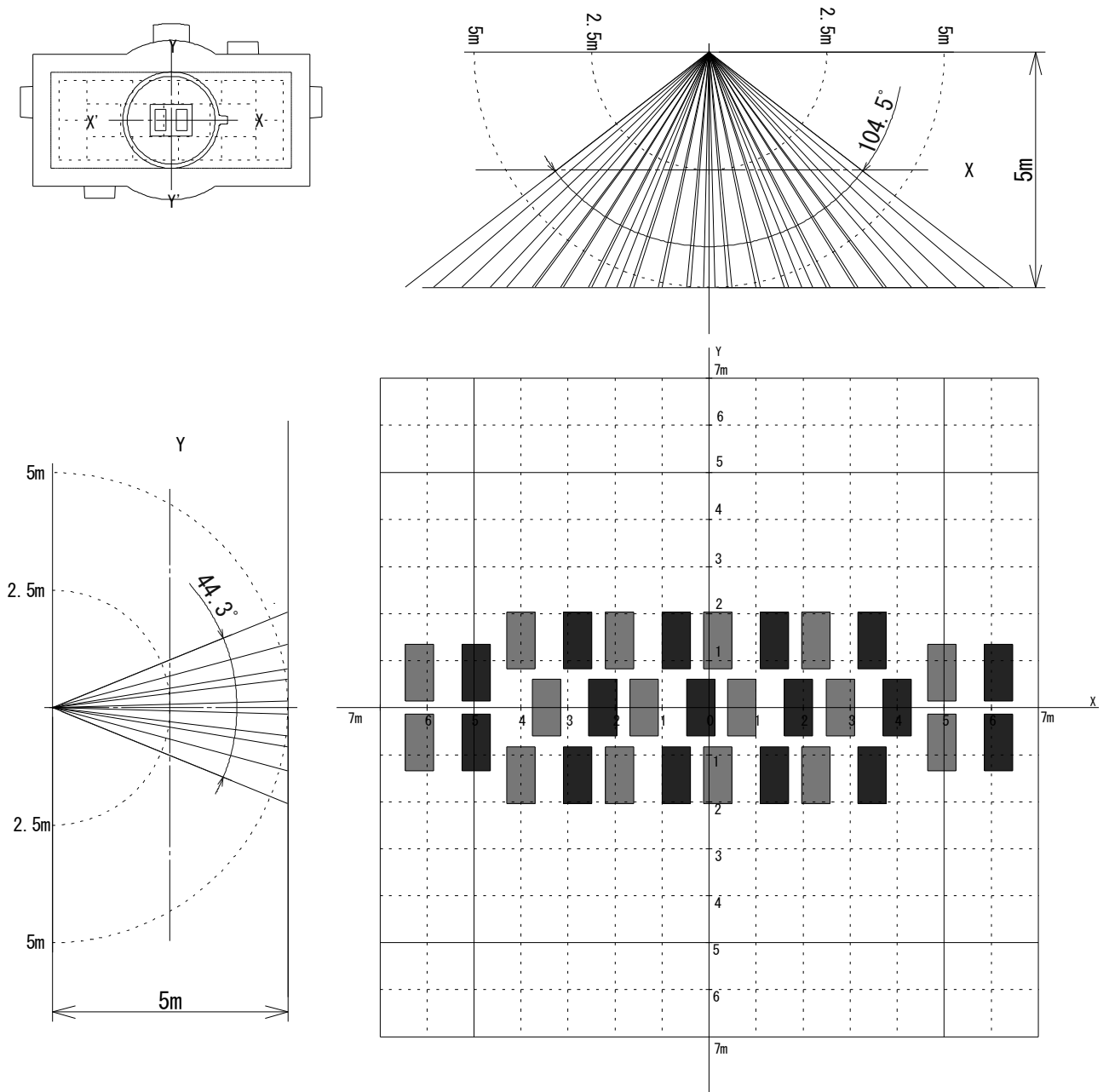


Tolerance without instruction : (+/-) 0.2
Unit [mm]

Figure 1: Dimensions

MODEL NO. :	DRAWING NO. :	REV :	PAGE	
NCL-11(BLACK)		A	3 / 5	
PART NO. :				

Sensor: Dual element



Distance : 5.0 m

[Traverse Plane]

Unit [m]

※ Measured with Nicera Standard 72.5dB amplifier when human body with 4 degrees C of temperature difference to environment moves at 1m/sec speed.

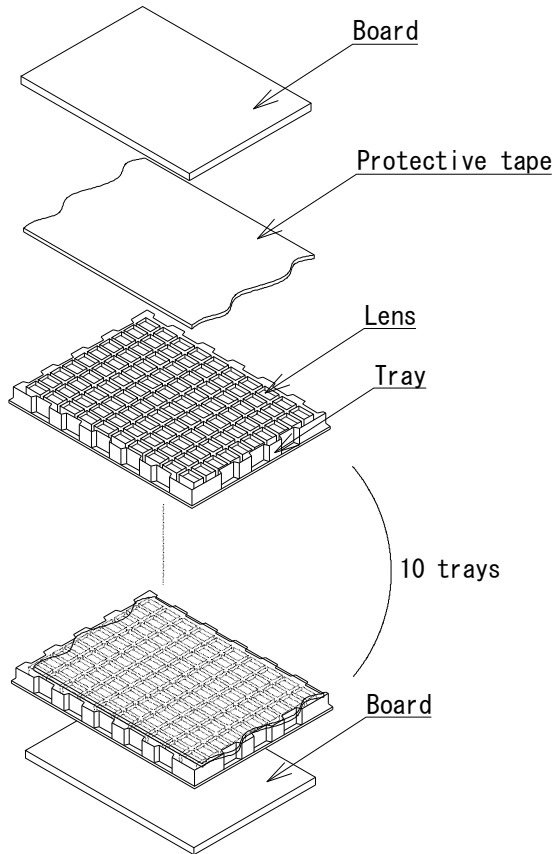
Figure 2: Detection Area (with Single Element PIR)

MODEL NO. :	DRAWING NO. :	REV :	PAGE	
NCL-11(BLACK)		A	4 / 5	
PART NO. :				

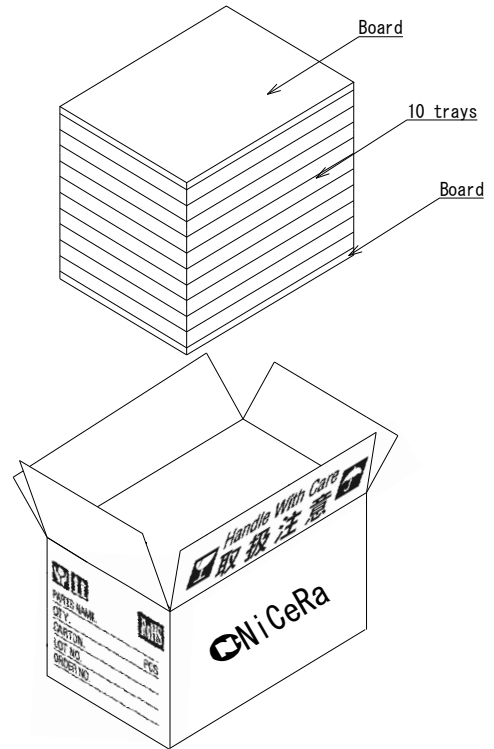
Packing Specification

The products are put in a tray, and 10 trays are packed in an inner box.

1. Product arrangement 100 pcs. / tray

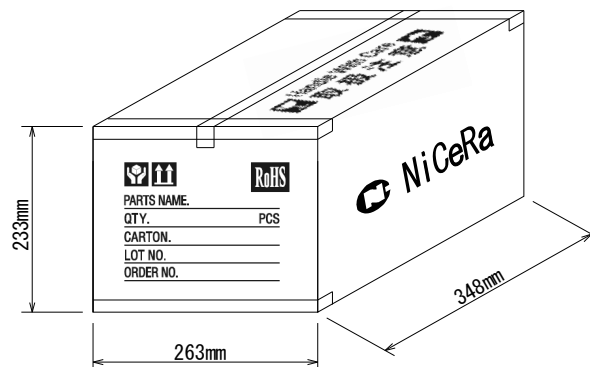


2. Packing 10 trays × 100 pcs. / 1,000 pcs.



3. Packing in a box

The outer box is sealed with stick tape.



4. Standard Package Quantity : 1,000pcs.

MODEL NO. :	DRAWING NO. :	REV :	PAGE	
NCL-11(BLACK)		A	5 / 5	
PART NO. :				